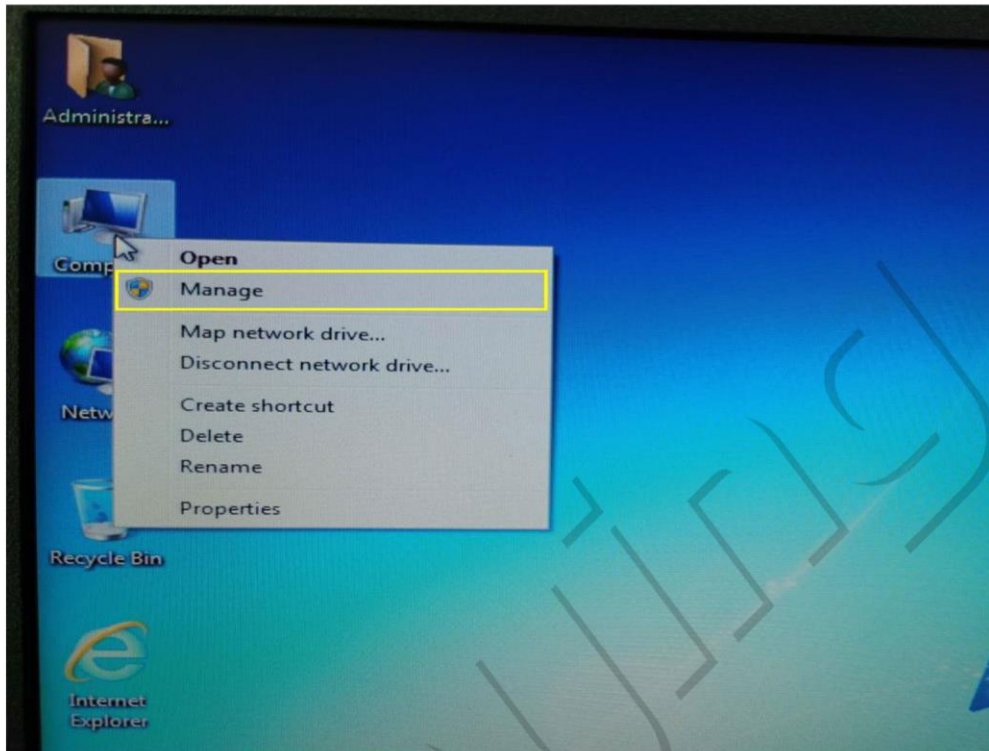
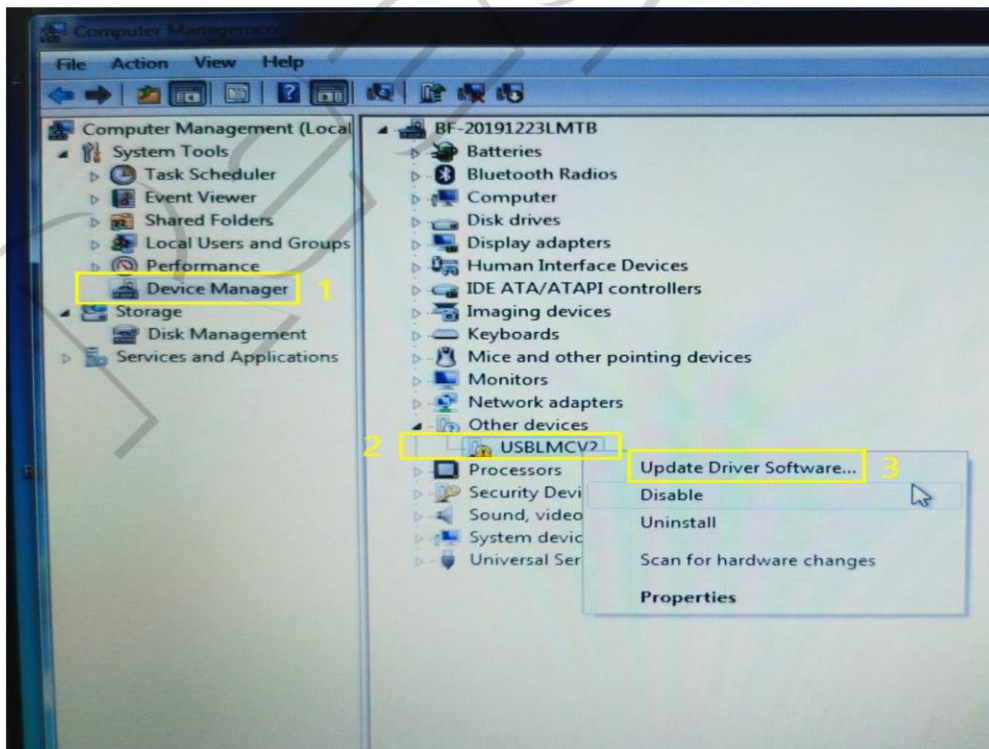


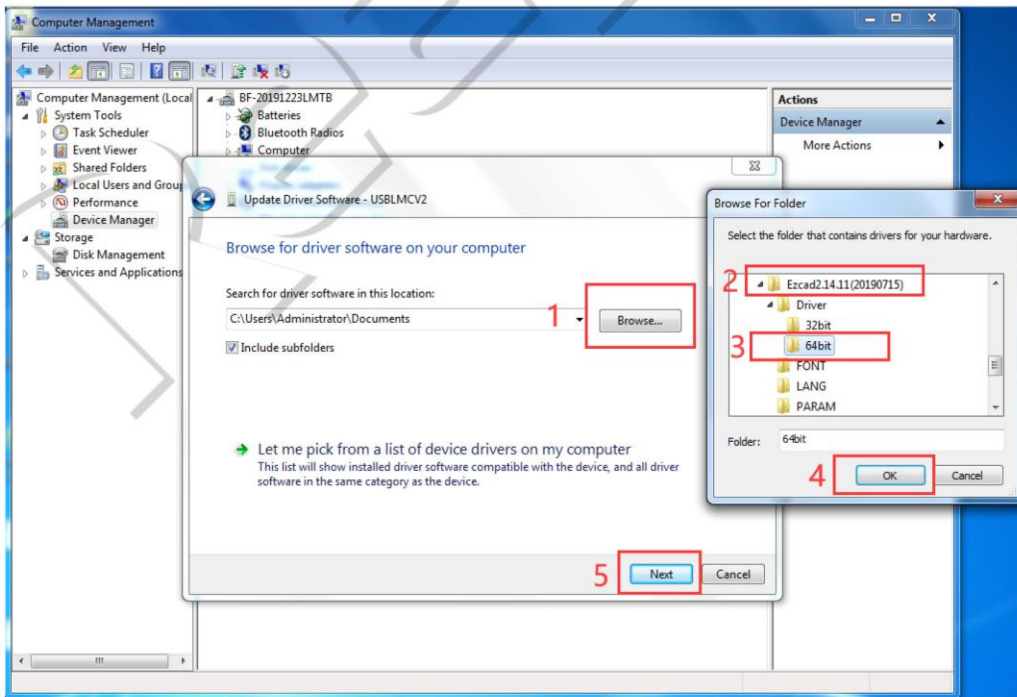
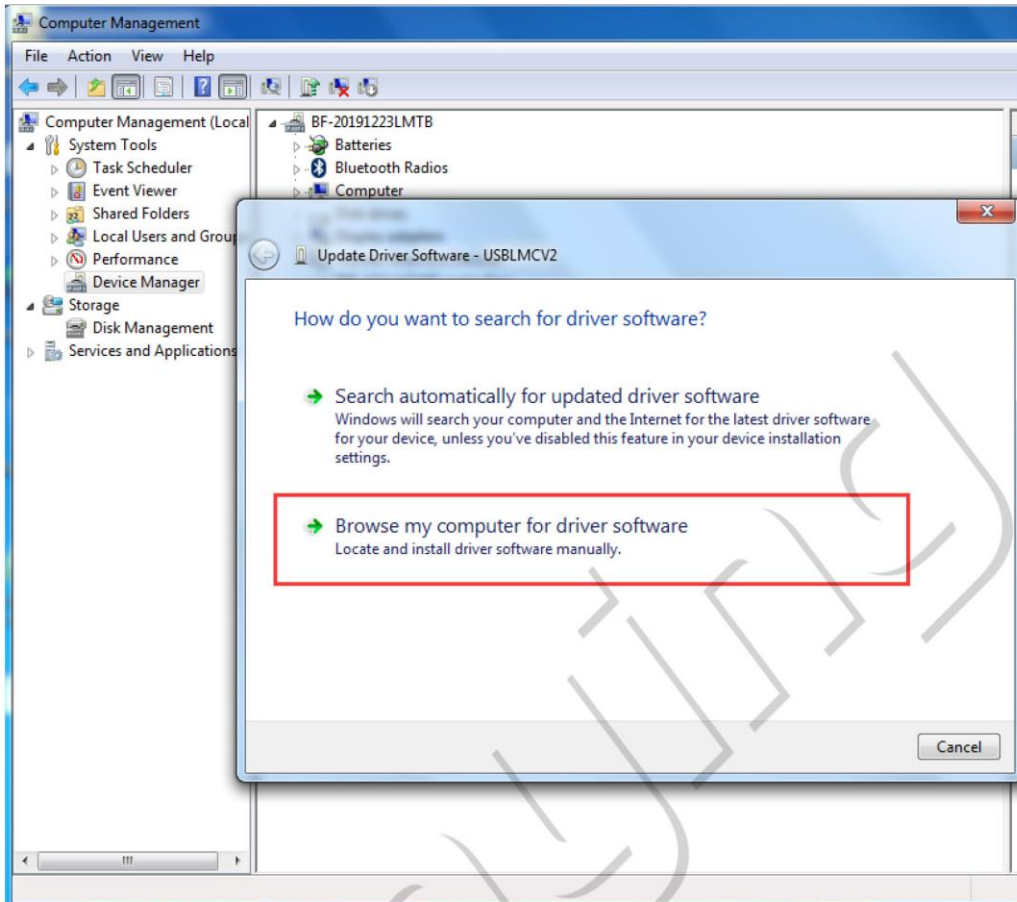
1. Turn on machine, connect the Laptop and machine by USB cable.
2. Computer-Manager



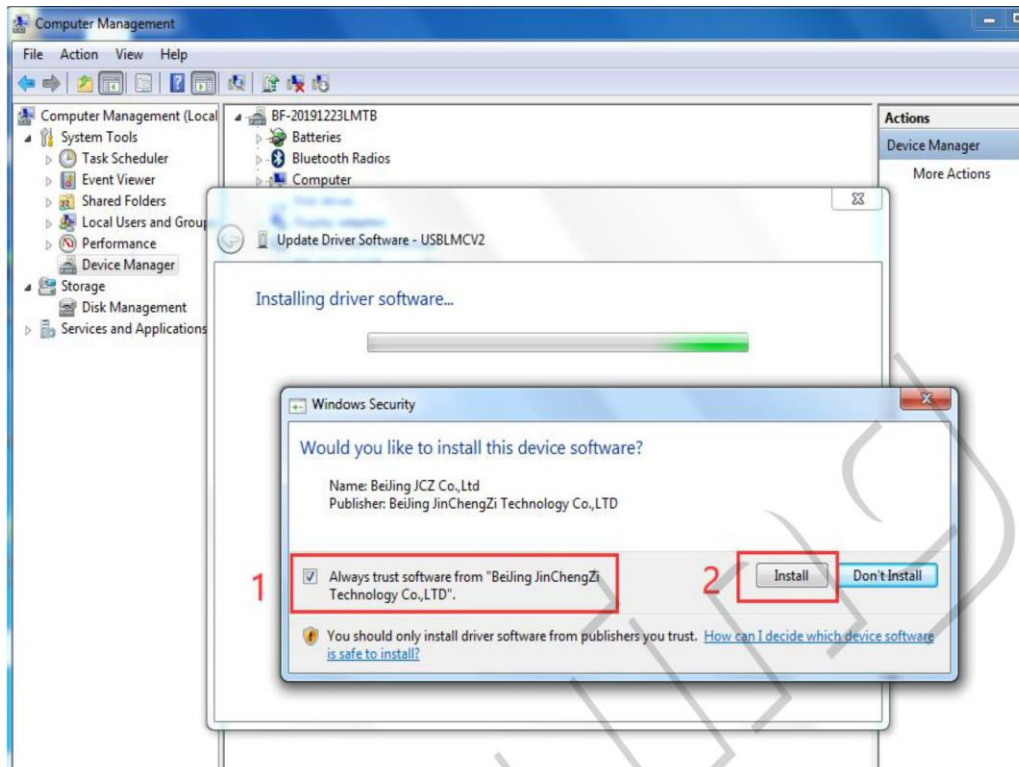
3. Device Manager-Other device-USDLMCV2-Update Driver Software



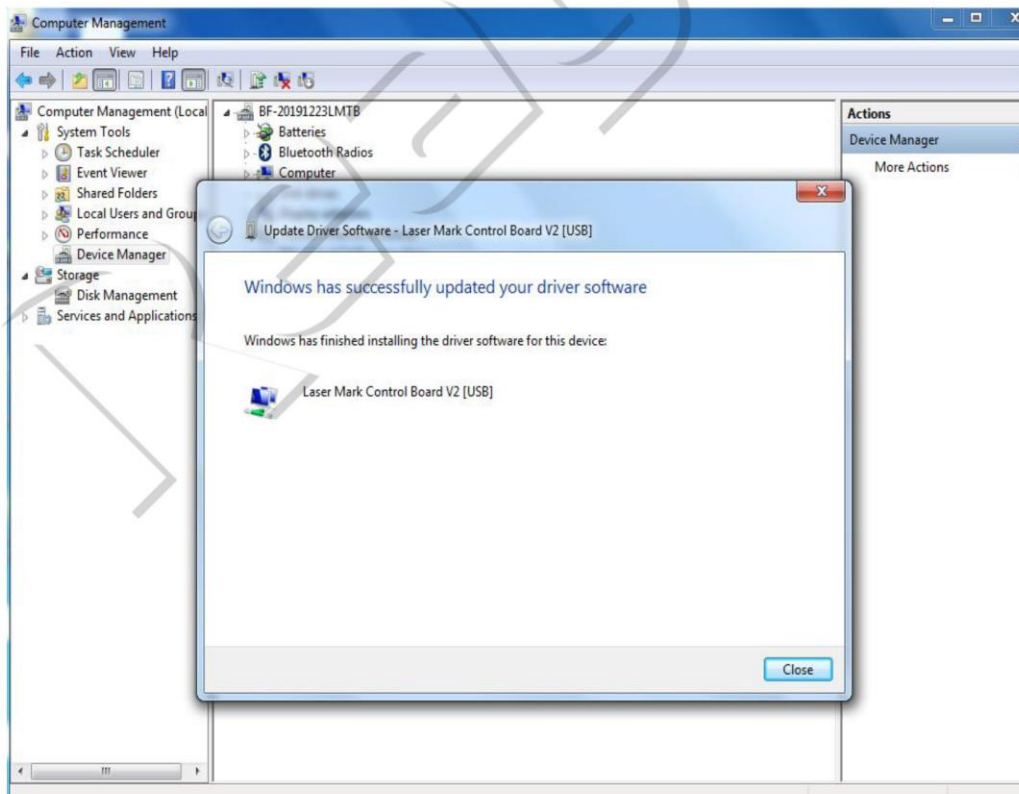
4. Browse my computer for driver software.



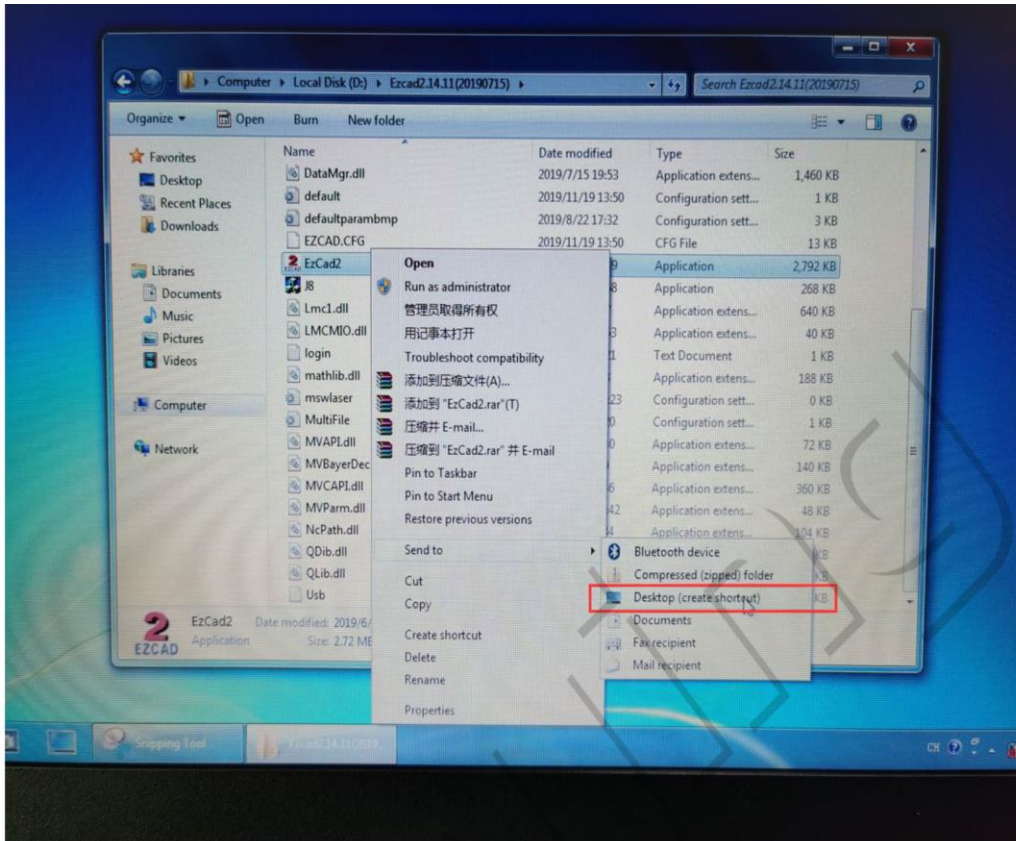
5. Choose "Always trust software from Beijing JinChengZi Technology Co., Ltd" - Install



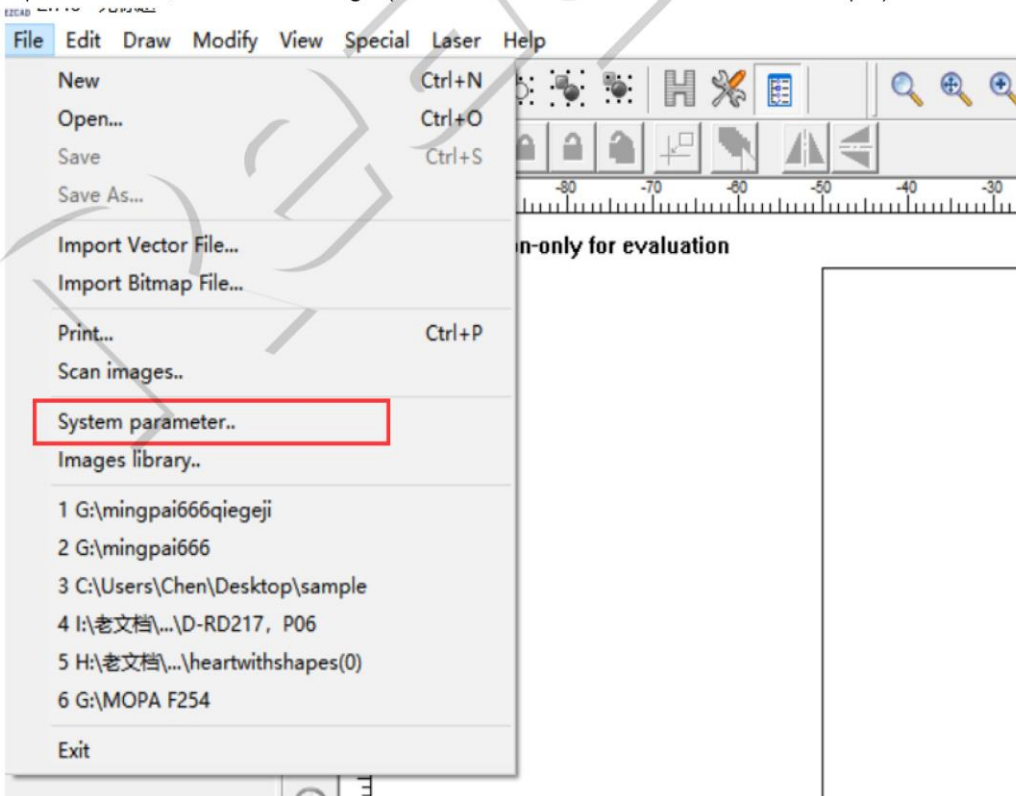
6. Successfully updated and close the window.

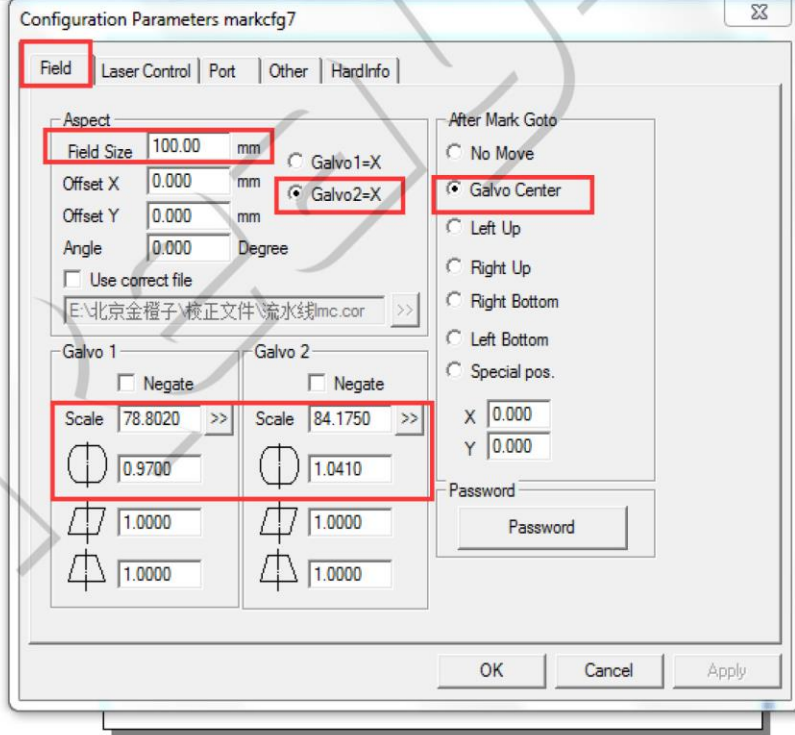
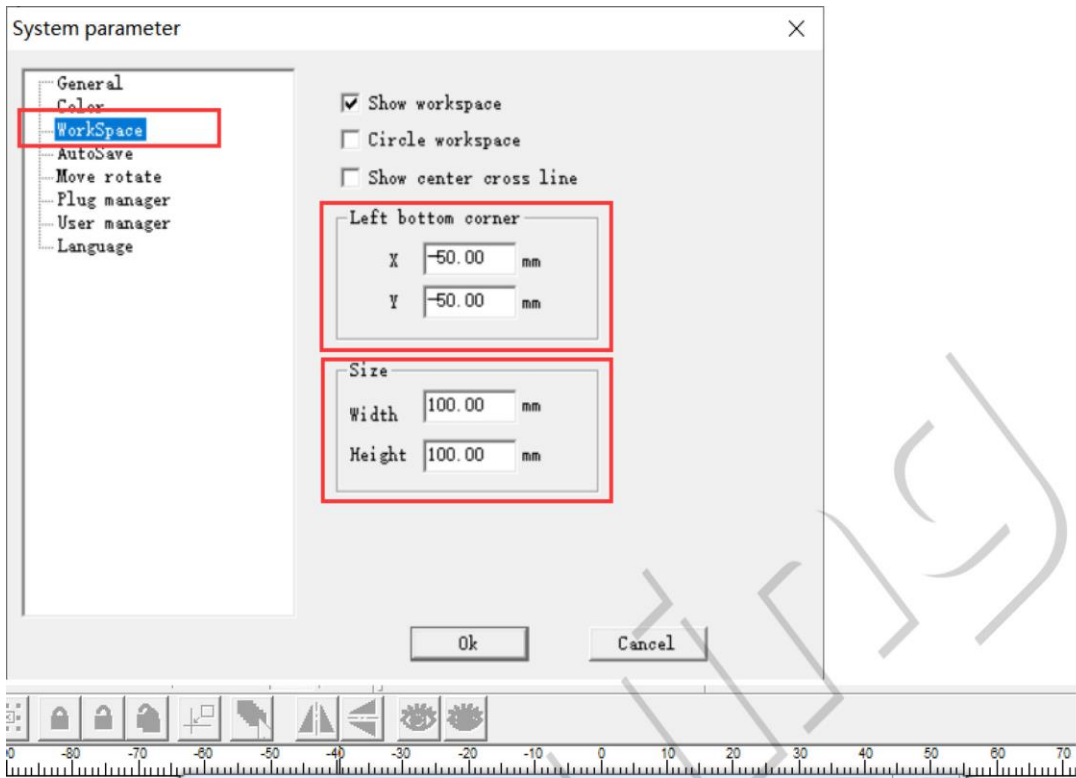


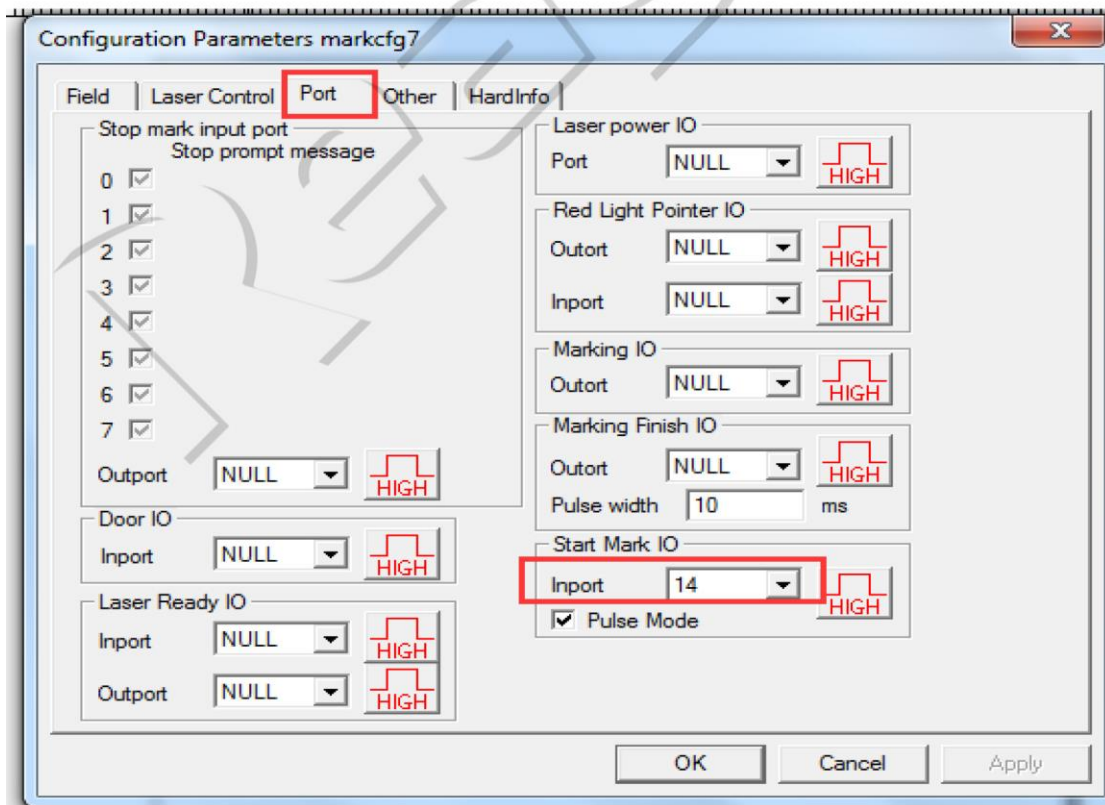
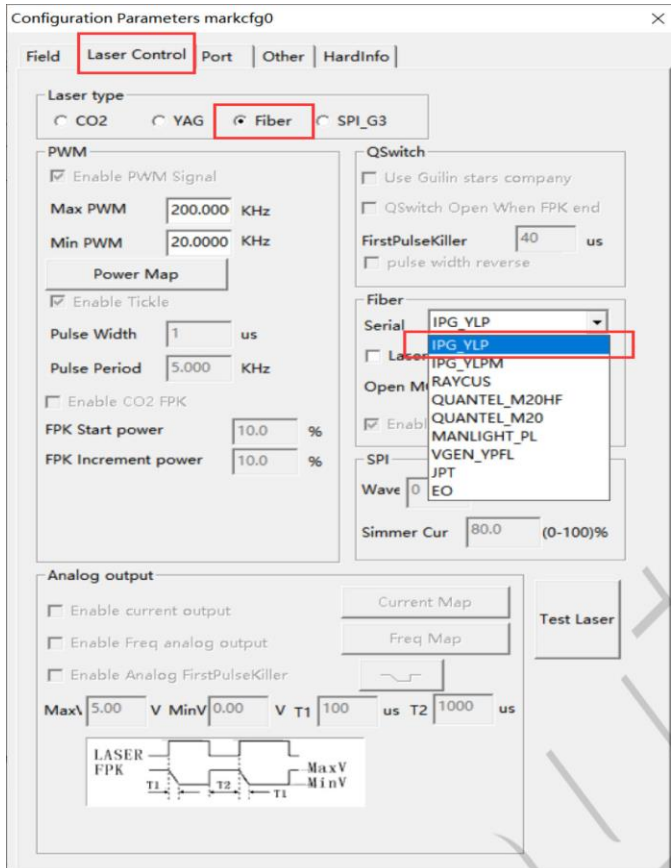
7. Create shortcut of software.

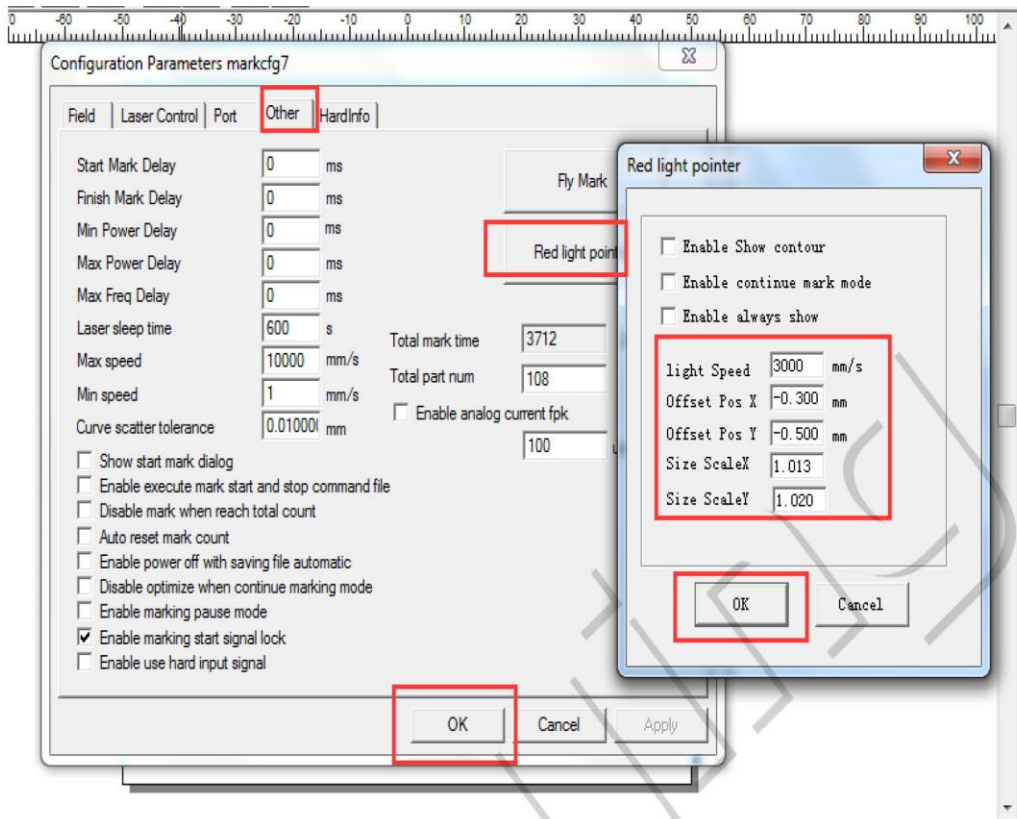


8. Open software, finish the settings. (Take 100x100mm field lenses as an example)

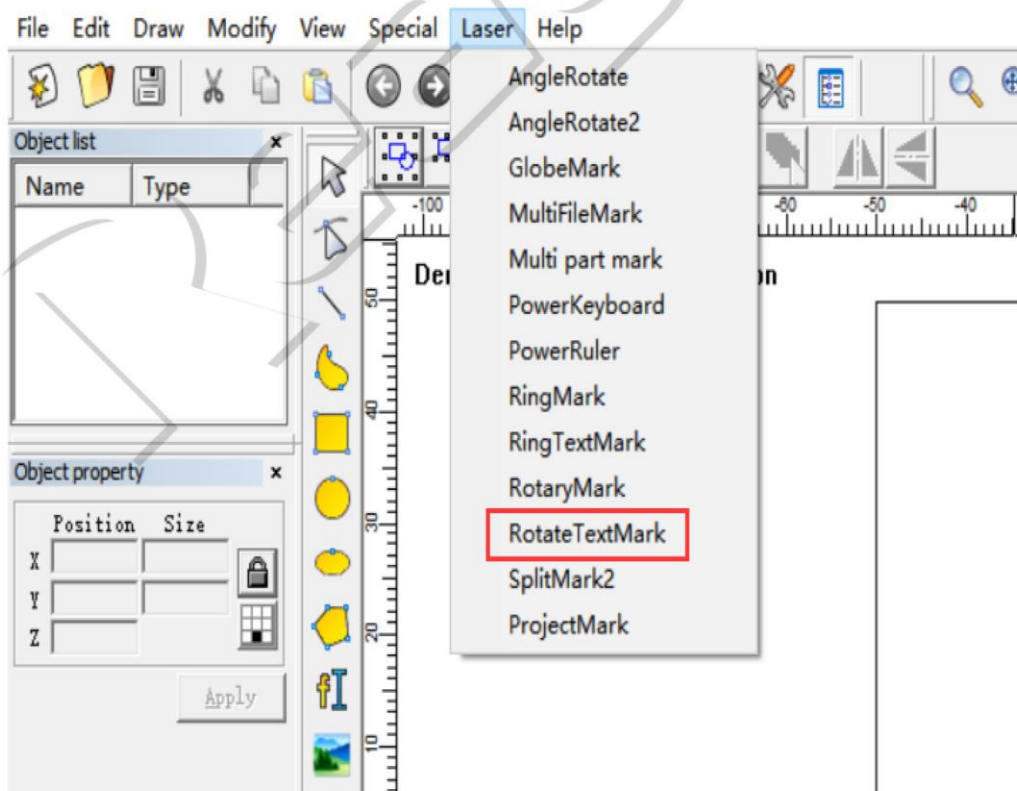


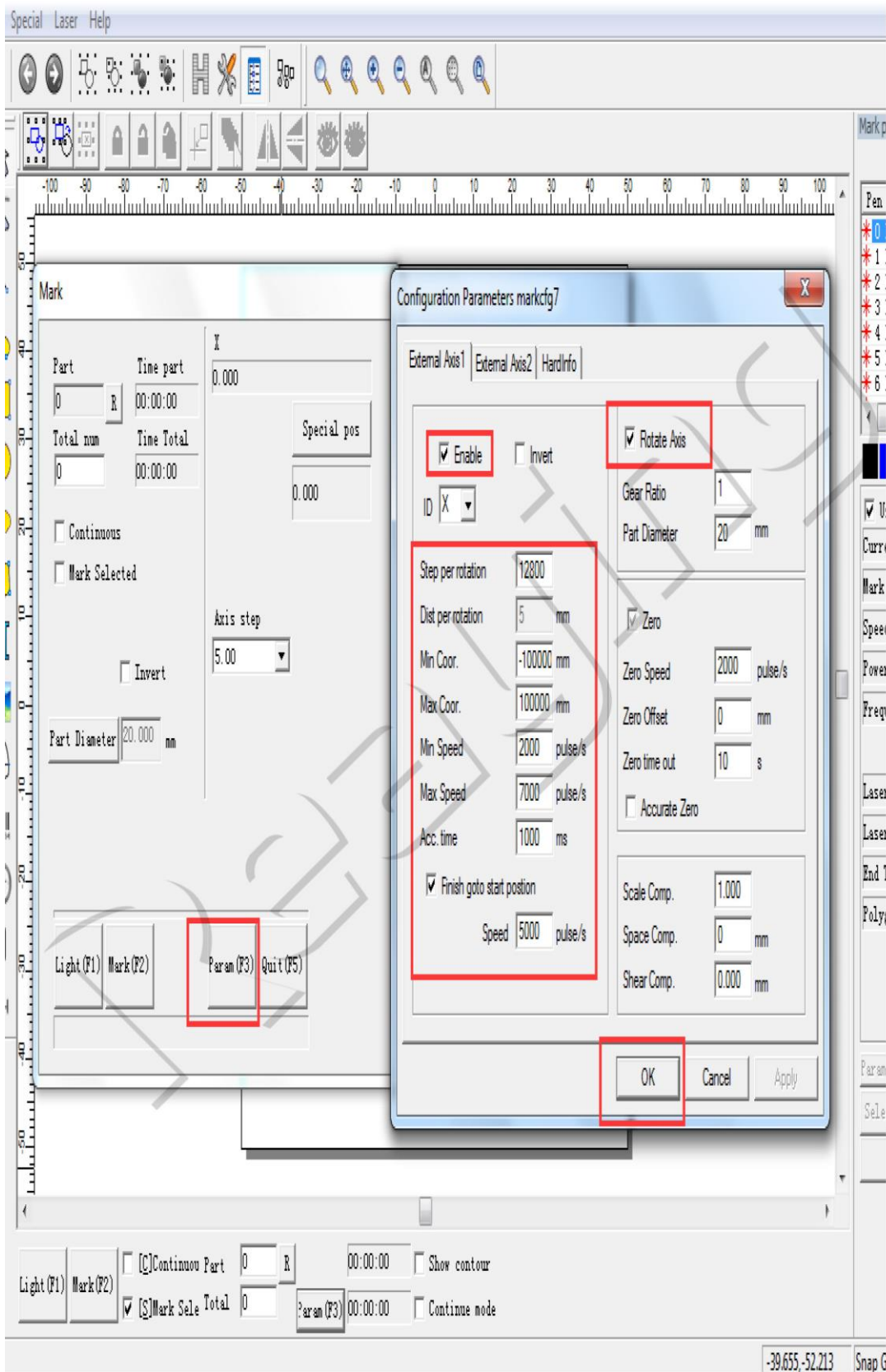






9. If you have the rotary attachment.





Configuration Parameters markcfg7

External Axis1 External Axis2 HardInfo

Enable Invert

Rotate Axis

Gear Ratio 1
Part Diameter 20 mm

Step per rotation 12800
Dist per rotation 5 mm
Min Coord. -100000 mm
Max Coord. 100000 mm
Min Speed 2000 pulse/s
Max Speed 7000 pulse/s
Acc. time 1000 ms

Zero
Zero Speed 2000 pulse/s
Zero Offset 0 mm
Zero time out 10 s
 Accurate Zero

Finish goto start position
Speed 5000 pulse/s

Scale Comp. 1.000
Space Comp. 0 mm
Shear Comp. 0.000 mm

OK Cancel Apply

Part 0 R Time part 00:00:00
Total num 0 Time Total 00:00:00
Special pos 0.000

Continuous
 Mark Selected

Axis step 5.00

Invert

Part Diameter 20.000 mm

Light (F1) Mark (F2) Param (F3) Quit (F5)

Light (F1) Mark (F2) [C]Continou Part 0 R 00:00:00 Show contour
 [S]Mark Sele Total 0 Param (F3) 00:00:00 Continue mode